

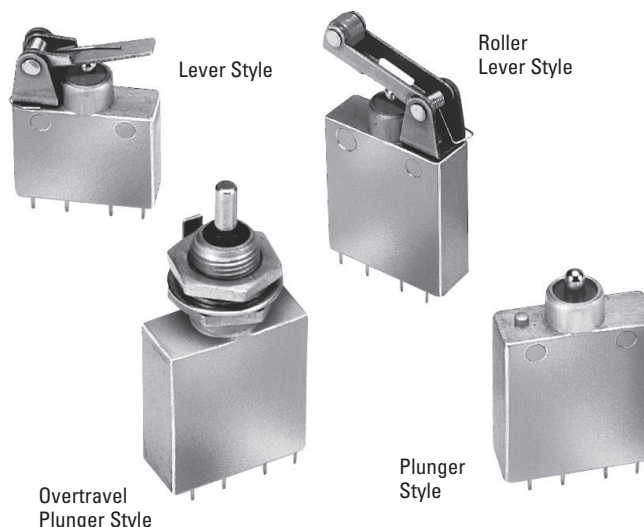
FEATURING OTTO B5 SERIES BASIC SWITCHES

These subminiature sealed switches are contained in a rugged aluminum housing with choice of lever, roller or plunger. Featuring the B5 series basic switch, the P6-3 series is able to switch up to 10 amps. The high contact pressure and superior wiping action of the OTTO design also makes the P6-3 series an excellent choice when switching logic level loads.

Sealing against water and other liquids is per MIL-PRF-8805. Wire leaded models feature potted leads. The solder terminals are epoxy sealed.

Features:

- Compact design
- Watertight to MIL-PRF-8805
- Choice of four actuator styles
- Choice of wire lead or solder termination styles
- Up to 10 amps switching capability
- High contact pressure
- Precision operating points



Your official representative



ALDERS
Indicate. Control. Connect.

ALDERS electronic GmbH
Arnoldstraße 19
47906 Kempen - Germany

+49 2152 8955-0
sales@alders.de / www.alders.de

Standard Characteristics/Ratings:

ELECTRICAL RATINGS:	Sea Level @ 28VDC		50,000 feet @ 28VDC	
	Single Circuit N.O. or N.C.	2 Circuit Per Pole	Single Circuit N.O. or N.C.	2 Circuit Per Pole
Resistive	10A	10A	10A	10A
Inductive	7.5A	5A	3.5A	2A
Motor	4A	2A	N/A	N/A
DWV	1000Vrms		500Vrms	

Electrical Life: 50,000 cycles

Mechanical Life: 50,000 cycles

OPERATIONAL:	P6-31	P6-32	P6-33	P6-34	P6-35	P6-36	P6-37	P6-38
Operating Force:	16 oz max	40 oz max	20 oz max	40 oz max	32 oz max	40 - 60 oz max	20 oz max	48 oz max
Release Force:	4 oz min	8 oz min	4 oz min	8 oz min	4 oz min	24 oz min	4 oz min	8 oz min
Movement Differential:	0.060" max	0.020"±0.010" max	0.060" max	0.020"±0.010" max	0.080" max	0.010" - 0.035" max	0.080" max	0.040" max
Pretravel:	0.125" max	0.050" max	0.125" max	0.070" max	0.125" max	0.050" max	0.125" max	0.070" max
Overtravel:	0.025" min	0.012" min	0.025" min	0.187" min	0.025" min	0.012" min	0.025" min	0.187" min
Strength of Actuator:	10.0 lbs.	25.0 lbs.	10.0 lbs.	25.0 lbs.	10.0 lbs.	25.0 lbs.	10.0 lbs.	25.0 lbs.

Temperature Range: -55°C to +85°C

Seal: Enclosure Design 3, watertight per MIL-PRF-8805

MATERIALS:

Plunger: Corrosion resistant steel

Lever: Corrosion resistant steel (where applicable)

Mounting Hardware: None provided except Actuator Style options 4 and 8 include hex nut, lockwasher and keyway washer

SUBMINIATURE WATERTIGHT SEALED

P6-3
LIMIT
SWITCHES

FEATURING OTTO B5 SERIES BASIC SWITCHES

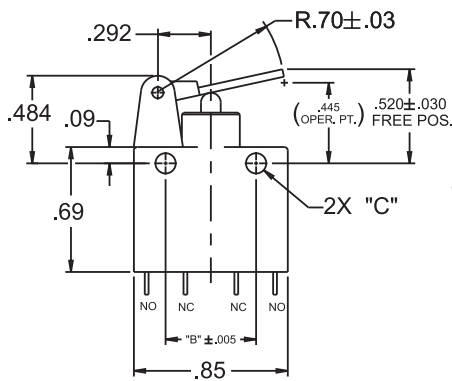
P6-3 PART NUMBER CODE

Single Pole

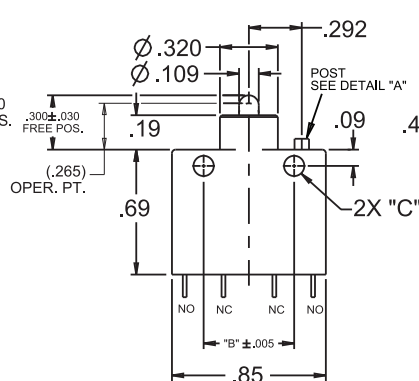
Actuator Style	Terminal Style	Circuitry	Mounting Holes (See drawing below.)	Serial Digit
1. Lever	1. Solder Terminals	1. SPNO-DB, Form X	1. No Holes	0. 0 Except for Specials
2. Plunger	3. 1' Potted Leads	2. SPNC-DB, Form Y	2. 1/2" Centers for #4-40 Screws	
3. Roller Lever	4. 3' Potted Leads	3. SPDT-SB, Form C	4. 3/8" Centers for #2-56 Screws	
4. Overtravel Plunger*	5. 6' Potted Leads	4. SPDT-DB, Form Z		

* No mounting holes are offered in models with threaded bushing

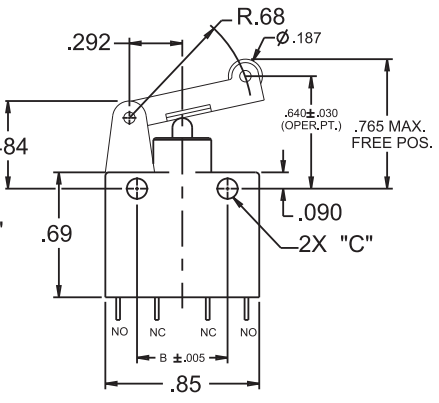
STYLE P6-31



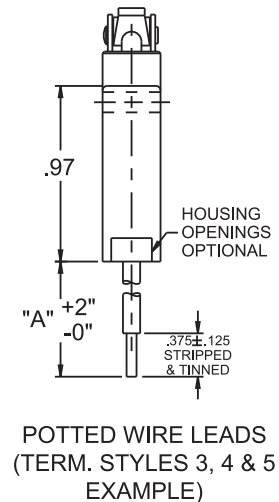
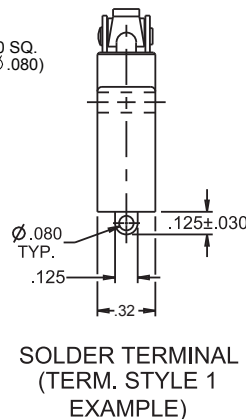
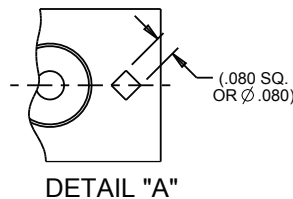
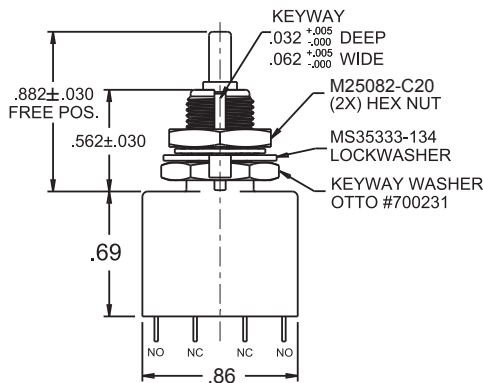
STYLE P6-32



STYLE P6-33



STYLE P6-34 *



CIRCUIT SCHEMATIC	
<p>SPNO - DB (FORM X)</p>	<p>SPNC - DB (FORM Y)</p>
<p>SPDT - SB (FORM C)</p>	<p>SPDT - DB (FORM Z)</p>

POTTED WIRE LEADS		MOUNTING HOLES:	
STYLE	DIM "A"		
3	12"	CODE 2 FOR 4-40 SCREWS	DIM "B" CNTRS. .500
4	36"	CODE 4 FOR 2-56 SCREWS	DIM "C" DIA. Ø.112 ± .003
5	72"		Ø.089 ± .003

FEATURING OTTO B5 SERIES BASIC SWITCHES

P6-3 PART NUMBER CODE

Double Pole

P6-3 X

X

X

X

X

Actuator Style

- 5. Lever
- 6. Plunger
- 7. Roller Lever
- 8. Overtravel Plunger*

Terminal Style

- 1. Solder Terminals
- 2. Taper Tab, Quick Disconnect
- 3. 1' Potted Leads
- 4. 3' Potted Leads
- 5. 6' Potted Leads

Circuitry

- 1. DPNO-DB, Form XX
- 2. DPNC-DB, Form YY
- 3. DPDT, Form CC
- 4. DPDT-DB, Form ZZ

Mounting Holes (See drawing below.)

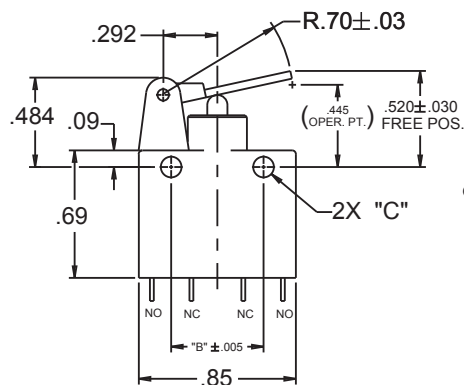
- 1. No Holes
- 2. 1/2" Centers for #4-40 Screws
- 4. 3/8" Centers for #2-56 Screws

Serial Digit

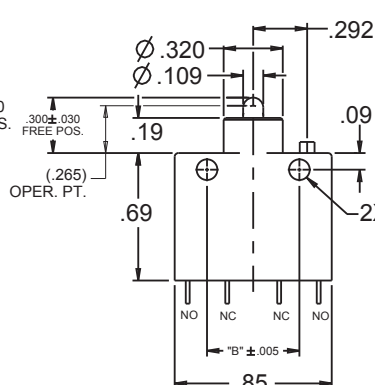
- 0. 0 Except for
Specials

* No mounting holes are offered in models with threaded bushing

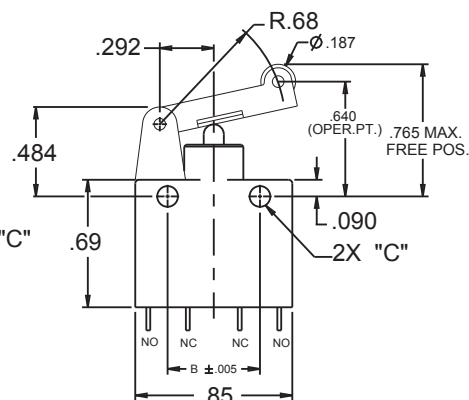
STYLE P6-35



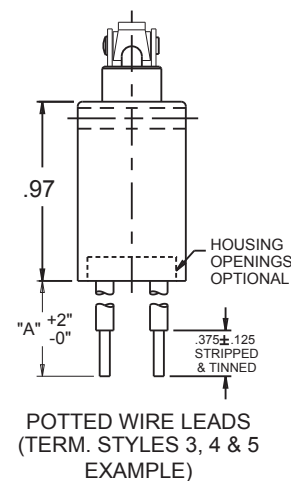
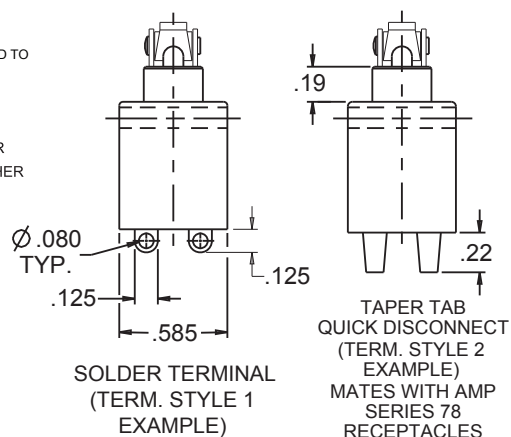
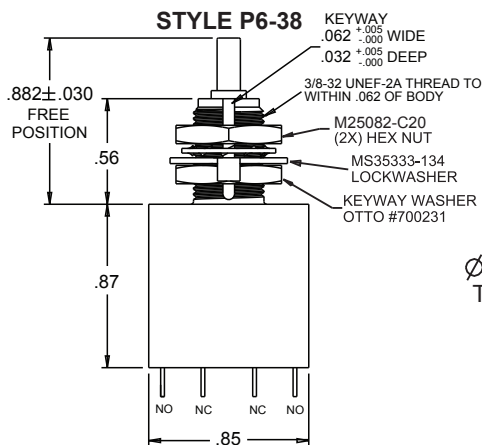
STYLE P6-36



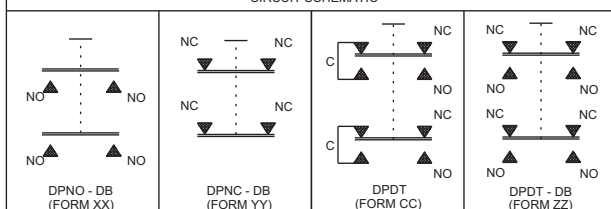
STYLE P6-37



STYLE P6-38



CIRCUIT SCHEMATIC



POTTED WIRE LEADS

STYLE	DIM "A"
3	12"
4	36"
5	72"

MOUNTING HOLES:

	DIM "B" CNTRS.	DIM "C" DIA.
CODE 2 FOR 4-40 SCREWS	.500	Ø.112 ± .003
CODE 4 FOR 2-56 SCREWS	.375	Ø.089 ± .003