

## SEALED, LATCHING PUSHBUTTON

The P9M pushbutton is a small, sealed, normally open, latching switch, ideal for basic ON/OFF functions. Push the button to latch it into position, push again to unlatch. Flush dome and raised dome button profiles are available in either gloss or matte finish.

The P9M comes with a standard 15/32" threaded case for hex nut mounting and features short behind panel depth. It also offers excellent performance while operating under severe conditions found in demanding applications.

The P9M is a quality precision switch designed for use in control panels, grips, computers, instruments and other applications where attractive, rugged, long life pushbutton switches are required.

### Features:

- **Sealed to IP68S**
- **All plastic housing & button construction**
- **15/32" standard bushing**
- **Flush and raised dome button styles in gloss or matte finish**
- **RoHS compliant**



Flush Dome  
Also available with  
Raised Dome

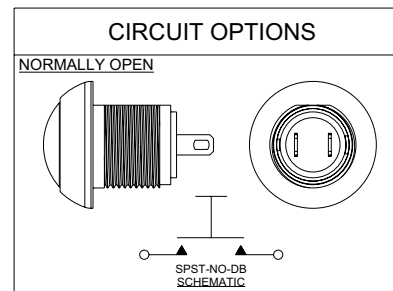
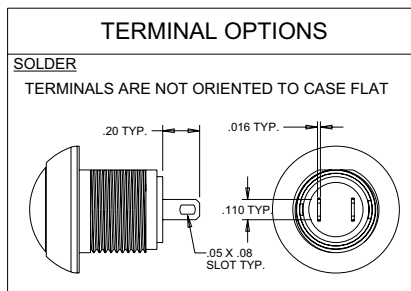
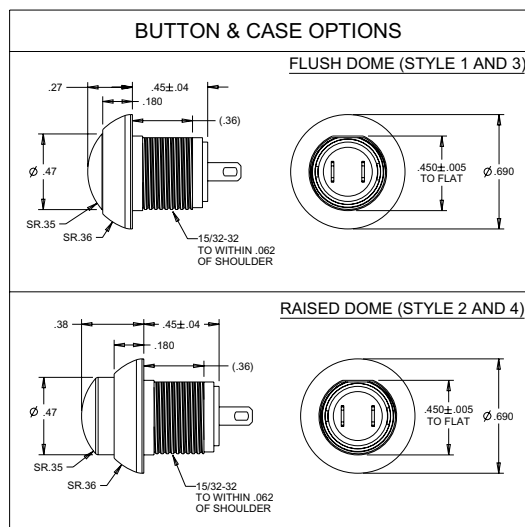


Latched Position

### Standard Characteristics/Ratings:

#### ELECTRICAL RATINGS: @ Sea Level

| Load   | Voltage  | Current | Life Cycles |
|--|----------|---------|-------------|
| Resistive  | 12VDC    | 4A      | 200,000     |
| Resistive  | 48VDC    | 1A      | 200,000     |
| Resistive  | 48VDC    | 2A      | 100,000     |
| Resistive  | 48VDC    | 3A      | 75,000      |
| Logic Level  | 5VDC     | 10mA    | 200,000     |
| DWV  | 1000Vrms |         |             |
| <b>Electrical Life:</b> See Rating Chart                     |          |         |             |
| <b>Mechanical Life:</b> 200,000 cycles                       |          |         |             |
| <b>Seal:</b> IP68S   |          |         |             |
| <b>Operating Temp Range:</b> -40°C to +85°C                  |          |         |             |
| <b>Operating Force:</b> 12+/-6 ounces                        |          |         |             |
| <b>Total Travel:</b> .071+/- .015 inches                     |          |         |             |
| <b>Contact Resistance:</b> 0.050 Ω max. initial              |          |         |             |
| <b>Insulation Resistance:</b> 1 GΩ min. at 500 VDC           |          |         |             |
| <b>MATERIALS:</b>  |          |         |             |
| <b>Case:</b> Thermoplastic                                   |          |         |             |
| <b>Button:</b> Thermoplastic                                 |          |         |             |
| <b>Contacts:</b> Silver with gold                            |          |         |             |
| <b>Mounting Hardware:</b> Hex nut, lockwasher and panel seal |          |         |             |



### P9M PART NUMBER CODE

| Button Style   | Case Style           | Case Finish                        | Terminal Style | Case Color | Button Color  |
|--|----------------------|------------------------------------|----------------|------------|---|
| 1. Flush Dome with Standard Gloss Finish<br>2. Raised Dome with Standard Gloss Finish<br>3. Flush Dome with Matte Finish<br>4. Raised Dome with Matte Finish | 1. Threaded 15/32-32 | 1. Gloss Finish<br>2. Matte Finish | 1. Solder      | 2. Black   | 1. Red<br>2. Black<br>3. Orange<br>4. Yellow<br>5. Green<br>6. Blue<br>7. Violet<br>8. Gray<br>9. White |



**ALDERS**  
Indicate. Control. Connect.

Your official representative

**ALDERS electronic GmbH**  
Arnoldstraße 19  
47906 Kempen - Germany  
+49 2152 8955-0  
[sales@alders.de](mailto:sales@alders.de) / [www.alders.de](http://www.alders.de)

Specifications Subject To Change Without Notice